

Customization of Carotid Revascularization Management to Optimize Outcomes

Mark W. Burket, MD
University of Toledo Medical Center
Toledo, OH
April 24, 2014



THE UNIVERSITY OF
TOLEDO
HEART AND VASCULAR CENTER

Customized Management

1. Lessons from Clinical Events Committees and the Court of Law
2. Customized access
3. Customized embolic protection
4. Customized revascularization

Lessons Learned from Clinical Events Committees and the Court of Law

One Clinical Events Committee (CEC)
case is worth 40 of my own

Who Does the CEC Review?

- Old ladies
- With damaged brains
- With comorbidities
- Without classical symptoms

The risk exceeds the likely benefit.

Sri Iyer 1997



“Don’t perform carotid stenting in asymptomatic people over 80 years old”

Why am I listening to this old lady’s neck?

What is the Easiest Target for a Malpractice Attorney?

The lack of an appropriate indication.

Customized Management

1. Lessons from Clinical Events Committees and the Court of Law
2. Customized access
3. Customized embolic protection
4. Customized revascularization

Aortic and Bilateral Iliac Occlusion

Brachial Artery Access



Arch



Simmons Catheter




Ansel Sheath



Final

Alternative Arm Access



Radial Artery

An angiogram showing the radial artery in the forearm. The artery is highlighted in black, contrasting with the lighter background of the surrounding tissues and veins. A catheter is visible in the upper left corner of the image.



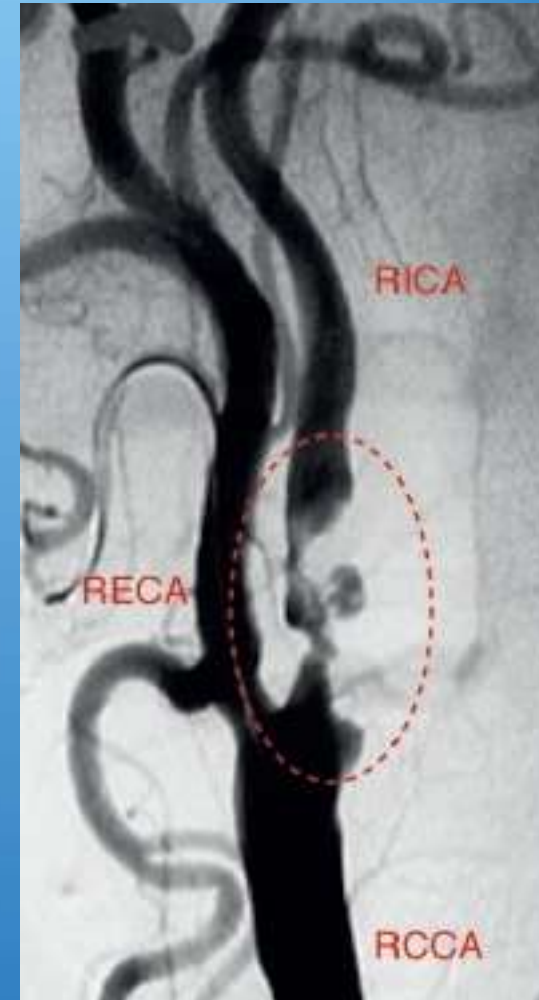
Ulnar Arterial Sheath

An intraoperative photograph showing a surgical incision on the ulnar side of the forearm. A green-tipped arterial sheath is inserted into the incision. The surrounding area is covered with blue surgical drapes.

Customized Management

1. Lessons from Clinical Events Committees and the Court of Law
2. Customized access
3. Customized embolic protection
4. Customized revascularization

Anatomy Defines Protection



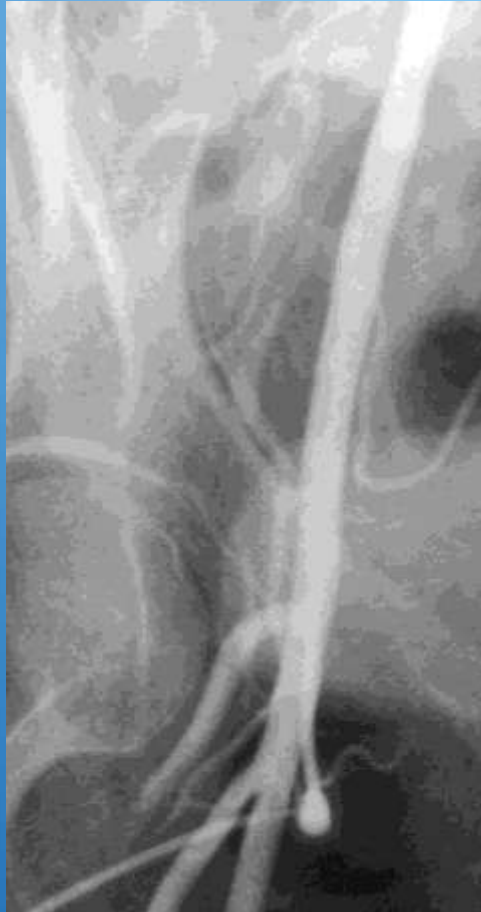
Proximal

Anatomy Defines Protection



Distal

Anatomy Defines Protection



Either



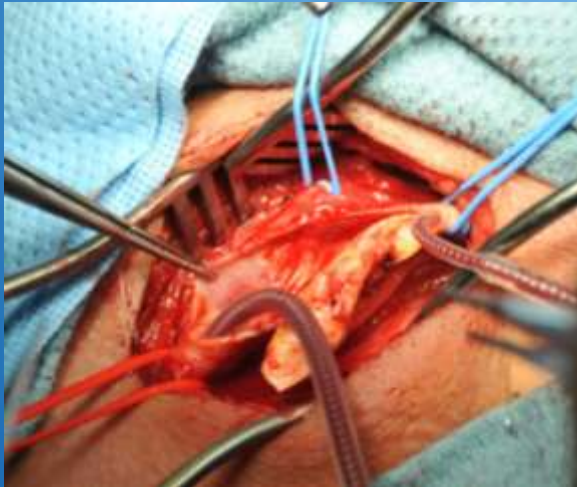
Typical Device Cost: Filter \$1380 - \$1550 US; Proximal protection \$1650

Customized Management

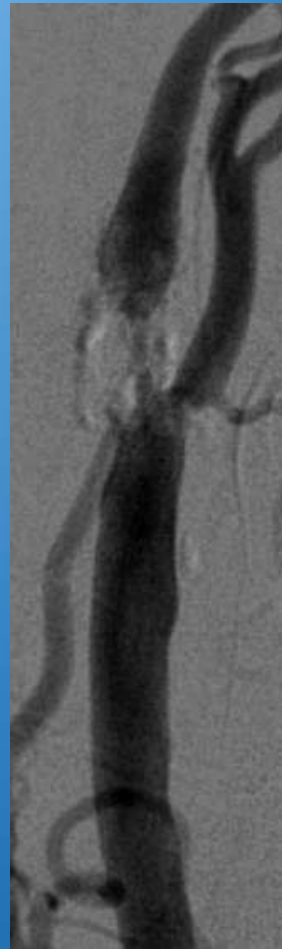
1. Lessons from Clinical Events Committees and the Court of Law
2. Customized access
3. Customized embolic protection
4. Customized revascularization

Stenting is not Always the Best Option!

- Dense calcification, especially circumferential
- Renal insufficiency
- Tortuous vessels
- Access problems
- When institutional surgical expertise exceeds interventional



Endarterectomy



Customized Care is the Best Care

- Stenting, surgery, or medications only
- Arm or leg access
- Proximal or distal protection
- Etc